

SCOTT
PARRY

— ASSOCIATES —
SELLING HOMES THAT FULFIL YOUR LIFESTYLE

SISKINS PENGOVER, LISKEARD, PL14 3NH

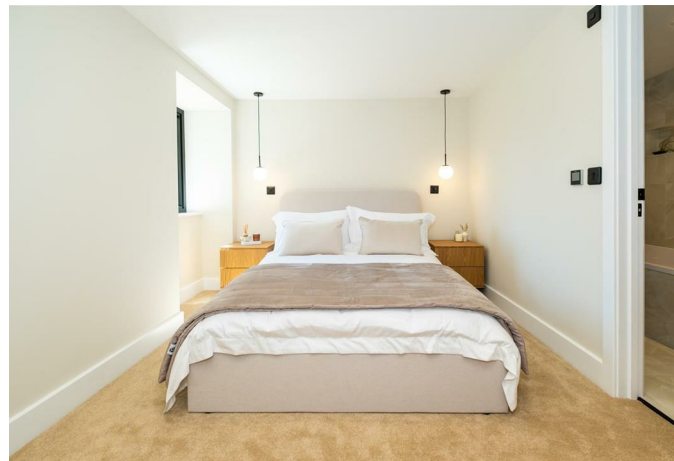
PRICE GUIDE £365,000

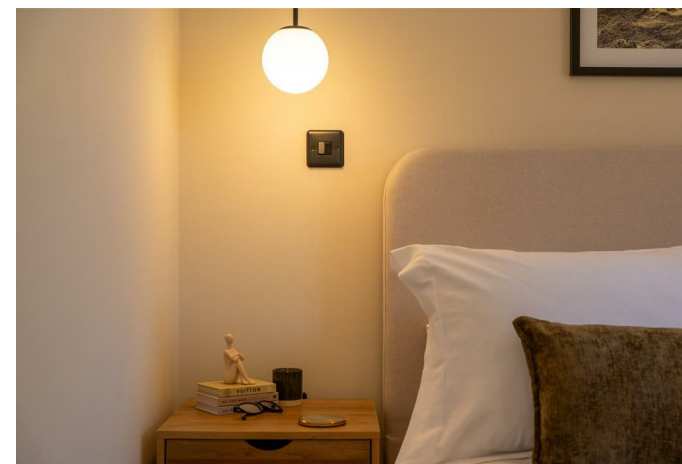




An immensely pretty and newly converted barn of exceptional style and quality with energy efficient features, in an exclusive development of just three others in a peaceful rural setting. About 1101 sq ft, Stunning 31' Open Plan Living Room/Kitchen with Vaulted Ceiling, Mezzanine Floor (Suit Study or Media Space), 2 Luxurious Double Bedrooms Both with Ensuite Bath/Shower Rooms, Cloakroom/WC, Laundry, Paved Sun Terrace, Large Garden, Parking for 4, Garage, 4.5kw Solar PV System, EPC - B.

MENHENIOT 1.5 MILES, LISKEARD - 1.5 MILES, LOOE AND THE BEACH - 10 MILES, PLYMOUTH - 21 MILES, EXETER - 56 MILES





Barn At Pengover, Pengover, Liskeard, PL14

Approximate Area = 1101 sq ft / 102.2 sq m (excludes void)

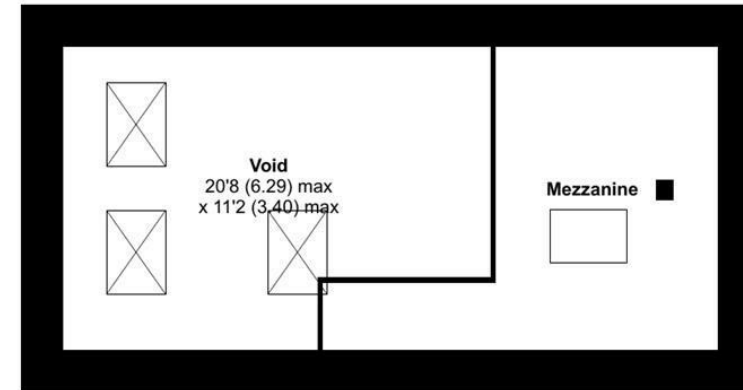
Limited Use Area(s) = 7 sq ft / 0.6 sq m

Total = 1108 sq ft / 102.8 sq m

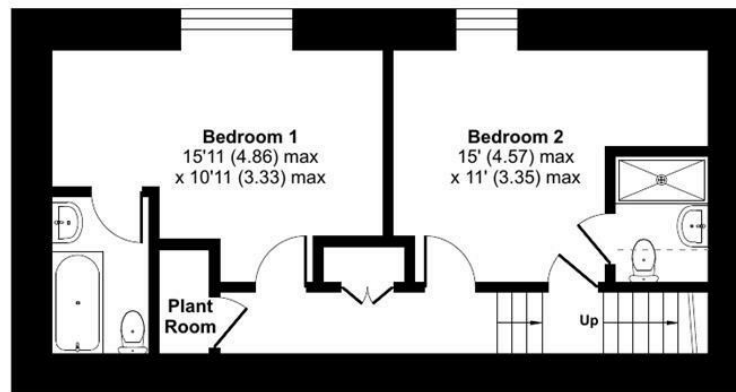
For identification only - Not to scale



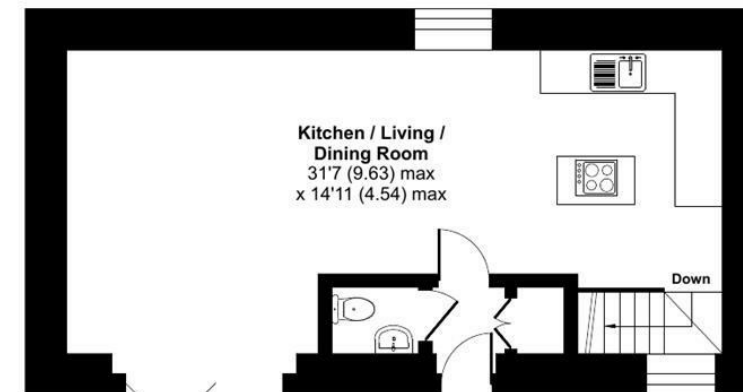
Denotes restricted
head height



MEZZANINE FLOOR



LOWER GROUND FLOOR



GROUND FLOOR



Floor plan produced in accordance with RICS Property Measurement 2nd Edition,
Incorporating International Property Measurement Standards (IPMS2 Residential). © nitchecom 2025.
Produced for Scott Parry Associates. REF: 1345261

These particulars should not be relied upon.